



---

# POINT TO POINT CONNECTION

---

Version 10/10

---

## INDEX

<b>1</b>	<b>INTRODUCTION .....</b>	<b>3</b>
1.1	NETWORK WITH A ROUTER .....	3
1.2	POINT TO POINT CONNECTION BETWEEN THE SH CONTROLLER AND A PC .....	3
1.2.1	<i>Controller configuration</i> .....	4
1.2.2	<i>PC configuration</i> .....	5
1.2.2.1	Windows Seven .....	5
1.2.2.2	Windows XP .....	6
1.2.2.3	Windows Vista.....	7

---

# 1 INTRODUCTION

## 1.1 NETWORK WITH A ROUTER

If you can connect the SH controller and your PC to a router that is a DHCP server, you have just to enable the DHCP functionality into the controller and your PC.

## 1.2 POINT TO POINT CONNECTION BETWEEN THE SH CONTROLLER AND A PC

If you do not have a router, to connect the controller directly to your PC you have to configure a private fixed IP in the controller and in the PC.  
Please follow the instruction below to do it.

*Before doing any changes in your PC, save the actual settings in order to be able to restore them once you have finished.*

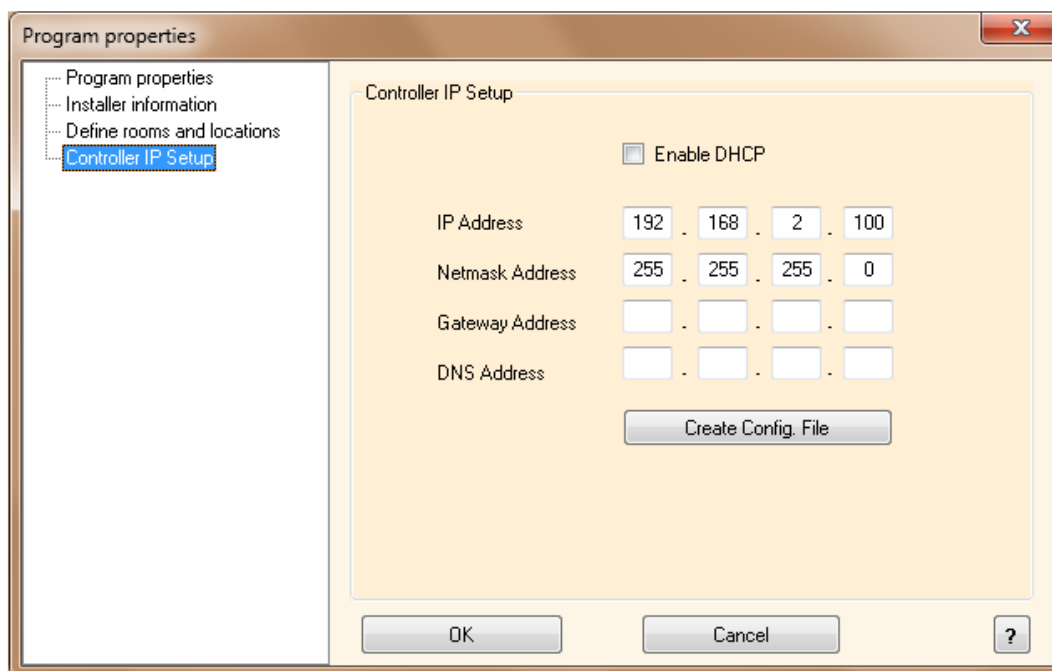
## 1.2.1 CONTROLLER CONFIGURATION

Before connecting the controller to your PC, some configurations have to be performed with the Configuration Tool: be sure to use the Configuration Tool 2.26.01 (or higher) and the associated firmware version 2.26.01 (or higher) into the controller.

You must always configure a *private* fixed IP address into the smart-house controller.

To do this, the Configuration Tool has to be used (starting from the 2.26 release): in the “Tool” menu, select “*Program Properties*” and then “*Controller IP setup*”.

The following window will appear:



**The DHCP addressing can not be used when you do not have a router. This means that if the “Enable DHCP” box is checked, you have to deselect it.**

In the “IP address” field insert *192.168.2.100*.

In the “Netmask address” field insert *255.255.255.0*.

The “Getaway address” field and DNS must be empty.

Once you have entered the required field, click on “*Create Config. File*”: the Configuration Tool will create the file *IPSettings.txt* that you have to copy into the SD card delivered with the controller or into any **EMPTY** SD card.

***Before changing IPsettings in Controller, make sure to remove ethernet cable from the controller.***

Then insert the SD card into the controller: it will automatically read the file.

The time necessary for the operation is about 5 seconds: when the **red** COM LED starts blinking continuously very quickly, remove the SD card. After a few seconds the controller will restart and the COM LED will start blinking in the usual way (a short flash every second).

**Now the new IP settings are stored into the controller.**



---

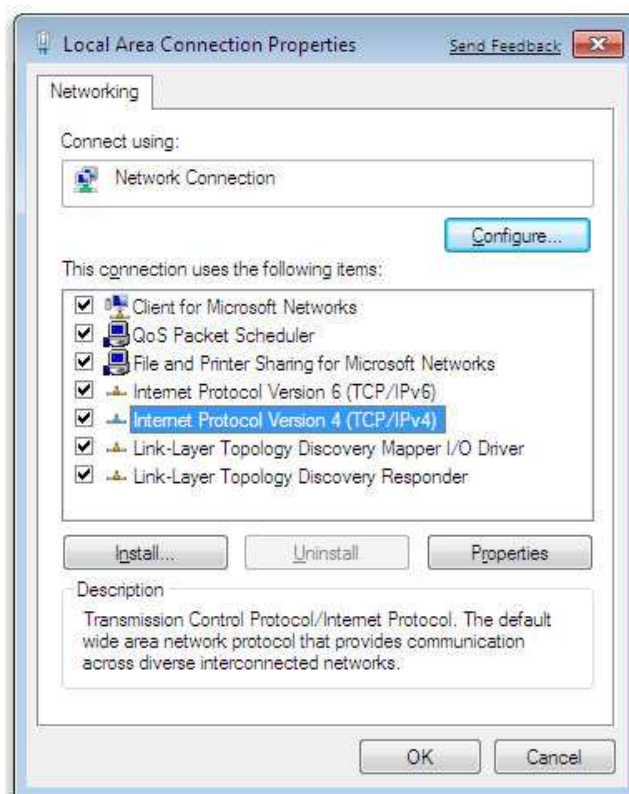
## 1.2.2 PC CONFIGURATION

Now you have to configure a private fixed IP address in your PC. Please follow the instruction below according to your Operating System.

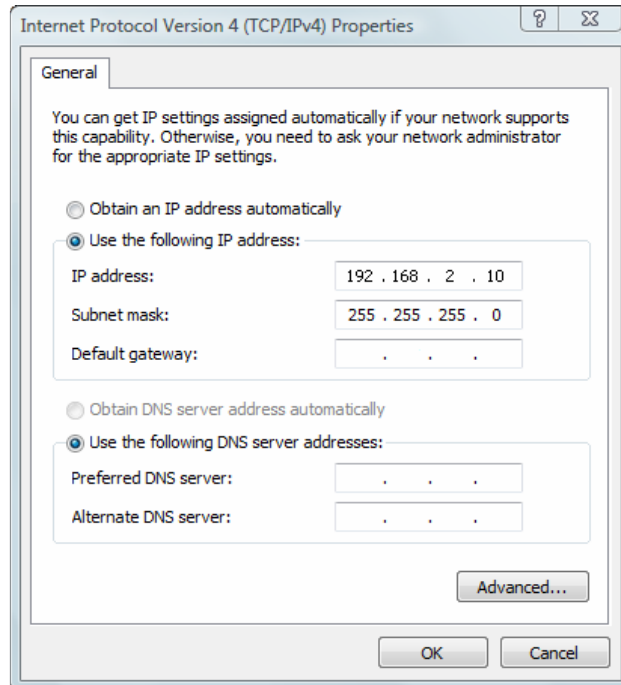
*Before doing any changes in your PC, save the actual settings in order to be able to restore them once you have finished.*

### 1.2.2.1 WINDOWS SEVEN

1. Open Network Connections by clicking the **Start** button , and then clicking **Control Panel**. In the search box, type **adapter**, and then, under Network and Sharing Center, click **View network connections**.
2. Right-click the connection that you want to change, and then click **Properties**.  If you're prompted for an administrator password or confirmation, type the password or provide confirmation.
3. Click the **Networking** tab. Under **This connection uses the following items**, click either **Internet Protocol Version 4 (TCP/IPv4)** and then click **Properties**.



- Specify an IP address, click **Use the following IP address**, and then, in the **IP address** insert **192.168.2.10**, and in the **Subnet mask** **255.255.255.0**.
- Leave the other fields empty (Gateway and DNS).



- Press “**OK**” to close all windows.
- Connect the controller to your PC through the Ethernet cable: the Smart-House Configurator will find the Smart-House controller. Now you can read and write your configuration.

### 1.2.2.2 WINDOWS XP

- Open Network Connections by clicking the Start **button**, clicking **Control Panel** and then **Network Connections** and select the LAN adapter which you want to connect the Controller of those available.
- Double Click on the network adapter choice. In the opened form select the option “**Internet Protocol (TCP/IP)**”.
- In the new window that appears, select the option “**Use the following IP address**” and in the “**IP Address**” field write 192.168.2.10 and write in the “**Subnet mask**” field 255.255.255.0.
- Leave the other fields empty (Gateway and DNS).
- Press “**OK**” to close all windows.
- Connect the controller to your PC through the Ethernet cable: the Smart-House Configurator will find the Smart-House controller. Now you can read and write your configuration.

---

### 1.2.2.3 WINDOWS VISTA

1. Open Network Connections by clicking the **Start** button, clicking **Control Panel**, clicking **Network and Internet**, clicking **Network and Sharing Center**, and then clicking **Manage network connections**.
2. Right-click the connection that you want to change, and then click **Properties**. If you are prompted for an administrator password or confirmation, type the password or provide confirmation.
3. Click the **Networking** tab. Under **This connection uses the following items**, click either **Internet Protocol Version 4 (TCP/IPv4)** and then click **Properties**.
4. Specify an IP address, click **Use the following IP address**, and then, in the **IP address** insert **192.168.2.10**, and in the **Subnet mask** **255.255.255.0**.
5. Leave the other fields empty (Gateway and DNS).
6. Press “**OK**” to close all windows.
7. Connect the controller to your PC through the Ethernet cable: the Smart-House Configurator will find the Smart-House controller. Now you can read and write your configuration.

